

---

## Container positioning for inspection

# SANCRT

## SANITARY CERTIFICATE



Port de Barcelona

### GUIDELINE FOR THE UN/EDIFACT D00B SANCRT MESSAGE

## Version 1.5

---

Message:	SANCRT
Version:	1.5
Date:	March 2013
Source:	<i>Port de Barcelona</i>

---



## CHANGE CONTROL

Version 1.5 includes the following changes to the previous version 1.4 from November 2010:

- The list regarding declaration numbers at the DOC segment (Group 1), has been modified with the following changes.
  - Phytosanitary has been divided in two parts, depending on the product destination: products for human consumption [Z50] or products for non-human consumption [Z51].
  - Veterinary has been divided in four parts, depending on the type of product: animal products [Z52], non-animal products [Z53], Designated Point of Entry [Z54] or animal products for human consumption [Z55].
  - Foreign Health has been divided in three parts, depending on the type of product: animal products [Z56], non-animal products [Z57] or Designated Point of Import [Z58].
  - The rest of numbers have been re-arranged as follows:
    - Pharmacy [Z59]
    - SOIVRE – Quality controls [Z60]
    - SOIVRE – CITES [Z61]
    - SOIVRE – Safety controls [Z62]
    - Guardia Civil – [Z63]
    - UAR – Risk analysis unit – [Z64]
    - CSI – Container Security Initiative – [Z65]
    - Megaports – [Z66]

Version 1.4 includes the following changes to the previous version 1.3 from May 2009:

- Code [Z29] “Guardia Civil” has been deleted from data element 1001 of segment DOC (Group 1).

Version 1.3 includes the following changes to the previous version 1.2 from January 2009:

- A new code has been included in data element 4405 of segment STS (header section) where UN/ECE recommendation 24 codes are used:
  - “125” No status. No status information is available. It will be used when the container has been sealed but the SCPP does not know if goods have been released or not.

Version 1.2 includes the following changes to the previous version 1.1 from September 2008:

- The SANCRT message will use the same document references that have been used in the previous COHAOR message. Segment DOC from SANCRT is linked to RFF (group 4) segment from COHAOR message.
- The codes used in DE1001 from segment DOC have been harmonized with the DE1154 codes from segment RFF (group 4) in the COHAOR message.

Version 1.1 includes the following changes to the previous version 1.0 from April 2008:

- DTM segment and header level has changed from optional to required.
- It has been deleted the CNT segment from the branching diagram (page 10).
- In page 34, group 6 is changed to 11, because 6 was a mistake.



**TABLE OF CONTENTS**

GENERAL INTRODUCTION .....4  
CHOREOGRAPHY .....6  
THE SANCRT MESSAGE .....7  
SEGMENT TABLE .....8  
BRANCHING DIAGRAM .....11  
SEGMENTS .....12  
DATA SET .....25  
SAMPLE MESSAGE .....27  
DOCUMENT MAINTENANCE .....28



## **GENERAL INTRODUCTION**

### **SCOPE OF THIS DOCUMENT**

This document has been developed by the Port of Barcelona and covers maritime-related electronic data interchange (EDI). Specifically it provides guidance as to the recommended usage of codes, qualifiers, data elements, composites, segments and groups of segments in the D00B SANCRT message.

### **UN/EDIFACT DIRECTORY REFERENCE**

This document is based on the UN/EDIFACT D00B directory.



---

## STATUS INDICATORS AND USAGE INDICATORS

### Status Indicators

Status Indicators (M and C) form part of the UN/EDIFACT standard and indicate a minimum requirement to fulfil the needs of the message structure.

The Status Indicators are:-

<i>Value</i>	<i>Description</i>
M	Mandatory  This entity must appear in all messages. Shown as Usage Indicator "M" in Implementation Guidelines.
C	Conditional  This entity is used by agreement between the parties to the transaction.

A 'Conditional' Status Indicator may be represented by a supporting Usage Indicator which is either R, O, D or X (see below)

### Usage Indicators

Throughout this document reference is made to indicators (M, R, D, O and X) which are shown adjacent to data items and which dictate for the particular message or set thereof the agreed usage of the data items or entities.

Set out below are the indicators and their respective uses:-

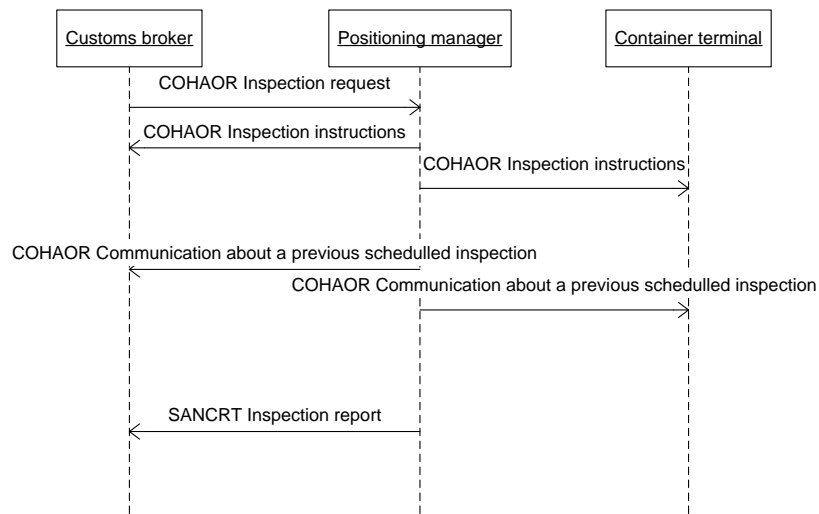
<i>Value</i>	<i>Description</i>
M	Mandatory  Indicates that this item is mandatory in the message.
R	Required  Indicates that this entity must be sent in this implementation.
D	Dependent  Indicates that the use of the entity depends upon a well-defined condition or set of conditions. These conditions must be clearly specified in the relevant implementation guideline.
O	Optional  Indicates that this entity is at the need or discretion of the sender of the message.
X	Not Used  Indicates that the entity is not to be used in this message implementation.



Where an element within a composite is marked “M” or “R”, but the composite has been marked “O” or “D”, this indicates that the element must always be transmitted only if the composite is used.

Implementers are advised to include the above information on Usage and Status Indicators in their Implementation Guidelines.

## CHOREOGRAPHY





## THE SANCRT MESSAGE

### FORMAL DEFINITION

*The SANCRT message permits a commercial operator to apply to a national agency for the issue of a certificate, permit, authorization etc. in respect of products to be imported or exported. It further permits the issuing authority to transmit to the applicant and to the exporting or importing country's relevant national authority, (e.g. Customs, Agriculture etc.) the details of the certificate, permit or authorization in respect of those products thus facilitating the import/export clearance of the consignment whilst ensuring that all certificate, permit, authorization requirements are met.*



**SEGMENT TABLE**

0010	UNH	UNH Message header	M	1	Mandatory
0020	BGM	BGM Beginning of message	M	1	Mandatory
0030	DTM	DTM Date/time/period	C	99	Required
0040	STS	STS Status	C	99	Required
0050	LOC	LOC Place/location identification	C	99	Not Used
0060	RFF	RFF Reference	C	99	Required
0070	FTX	FTX Free text	C	99	Required
0080	MEA	MEA Measurements	C	99	Not Used
0090	MOA	MOA Monetary amount	C	99	Not Used
0100	GEI	GEI Processing information	C	99	Not Used
0110	GST	CST Customs status of goods	C	4	Not Used
0120	Segment group 1				Required
0130	DOC	DOC Document/message details	M	1	Mandatory
0140	DTM	DTM Date/time/period	C	-9	Not Used
0150	LOC	LOC Place/location identification	C	-9	Not Used
0160	Segment group 2				Not Used
0170	PNA	PNA Party identification	M	1	Mandatory
0180	ADR	ADR Address	C	-9	Not Used
0190	Segment group 3				Not Used
0200	CTA	CTA Contact information	M	-4	Mandatory
0210	GOM	COM Communication contact	C	-9	Not Used
0220	Segment Group 4				Not Used
0230	TDT	TDT Details of transport	M	1	Mandatory
0240	DTM	DTM Date/time/period	C	9	Not Used
0250	LOC	LOC Place/location identification	C	9	Not Used
0260	RFF	RFF Reference	C	9	Not Used
0270	Segment group 5				Not Used
0280	PAC	PAC Package	M	1	Mandatory
0290	PCI	PCI Package identification	C	9	Not Used
0300	MEA	MEA Measurements	C	-9	Not Used
0310	Segment Group 6				Required
0320	EQD	EQD Equipment details	M	1	Mandatory
0330	TMP	TMP Temperature	C	-9	Not Used
0340	Segment Group 7				Required
0350	SEL	SEL Seal number	M	1	Mandatory
0360	DTM	DTM Date/time/period	C	9	Not Used
0370	LOC	LOC Place/location identification	C	-9	Not Used
0380	Segment group 8				Not Used
0390	PRC	PRC Process identification	M	1	Mandatory
0400	IMD	IMD Item description	C	9	Not Used
0410	MEA	MEA Measurements	C	9	Not Used
0420	DTM	DTM Date/time/period	C	9	Not Used
0430	LOC	LOC Place/location identification	C	9	Not Used
0440	DOC	DOC Document/message details	C	9	Not Used
0450	RFF	RFF Reference	C	9	Not Used
0460	TMP	TMP Temperature	C	9	Not Used
0470	GEI	GEI Processing information	C	99	Not Used
0480	FTX	FTX Free text	C	99	Not Used





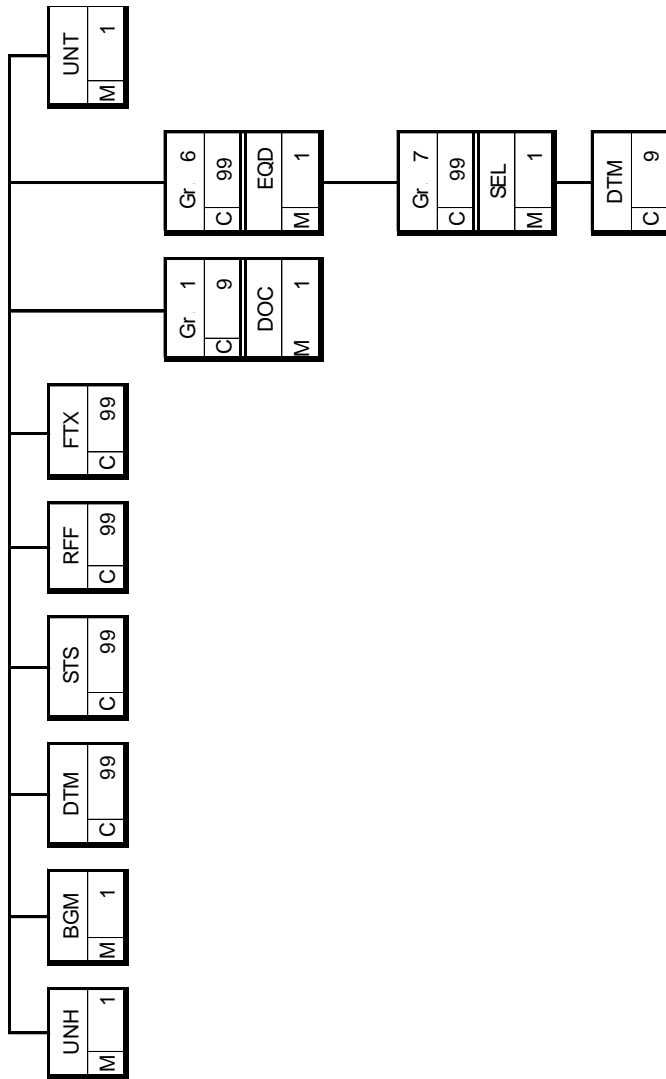
0490	Segment group 9			€	99	Not Used
0500	PNA	PNA Party identification	M	4		Mandatory
0510	ADR	ADR Address	€	9		Not Used
0520	Segment group 10			€	-9	Not Used
0530	CTA	CTA Contact information	M	4		Mandatory
0540	COM	COM Communication contact	€	9		Not Used
0550	Segment group 11			€	9999	Not Used
0560	LIN	LIN Line item	M	4		Mandatory
0570	CST	CST Customs status of goods	€	9		Not Used
0580	MEA	MEA Measurements	€	9		Not Used
0590	PIA	PIA Additional product id	€	9		Not Used
0600	IMD	IMD Item description	€	9		Not Used
0610	GIN	GIN Goods identity number	€	9999		Not Used
0620	RFF	RFF Reference	€	9		Not Used
0630	ATT	ATT Attribute	€	9		Not Used
0640	DTM	DTM Date/time/period	€	9		Not Used
0650	LOC	LOC Place/location identification	€	9		Not Used
0660	FTX	FTX Free text	€	9		Not Used
0670	QTY	QTY Quantity	€	9		Not Used
0680	MOA	MOA Monetary amount	€	9		Not Used
0690	Segment group 12			€	99	Not Used
0700	DOC	DOC Document/message details	M	4		Mandatory
0710	DTM	DTM Date/time/period	€	9		Not Used
0720	LOC	LOC Place/location identification	€	9		Not Used
0730	Segment group 13			€	99	Not Used
0740	PNA	PNA Party identification	M	4		Mandatory
0750	ADR	ADR Address	€	9		Not Used
0760	Segment group 14			€	9	Not Used
0770	CTA	CTA Contact information	M	4		Mandatory
0780	COM	COM Communication contact	€	9		Not Used
0790	Segment group 15			€	99	Not Used
0800	PAC	PAC Package	M	4		Mandatory
0810	PCI	PCI Package identification	€	9		Not Used
0820	MEA	MEA Measurements	€	9		Not Used
0830	Segment group 16			€	99	Not Used
0840	EQD	EQD Equipment details	M	4		Mandatory
0850	TMP	TMP Temperature	€	9		Not Used
0860	Segment group 17			€	99	Not Used
0870	SEL	SEL Seal number	M	4		Mandatory
0880	DTM	DTM Date/time/period	€	9		Not Used
0890	LOC	LOC Place/location identification	€	9		Not Used



0900	Segment group 18			C	99	Not Used
0910	PRC	PRC Process identification	M	4		Mandatory
0920	IMD	IMD Item description	C	9		Not Used
0930	MEA	MEA Measurements	C	9		Not Used
0940	DTM	DTM Date/time/period	C	9		Not Used
0950	LOC	LOC Place/location identification	C	9		Not Used
0960	DOC	DOC Document/message details	C	9		Not Used
0970	RFF	RFF Reference	C	9		Not Used
0980	TMP	TMP Temperature	C	9		Not Used
0990	GEI	GEI Processing information	C	99		Not Used
1000	FTX	FTX Free text	C	99		Not Used
1010	Segment group 19			C	99	Not Used
1020	PNA	PNA Party identification	M	4		Mandatory
1030	ADR	ADR Address	C	9		Not Used
1040	Segment group 20			C	9	Not Used
1050	CTA	CTA Contact information	M	4		Mandatory
1060	COM	COM Communication contact	C	9		Not Used
1070	CNT	CNT Control total	C	9		Not Used
1080	Segment group 21			C	99	Not Used
1090	AUT	AUT Authentication result	M	4		Mandatory
1100	DTM	DTM Date/time/period	C	9		Not Used
1110	UNT	UNT Message trailer	M	1		Mandatory



**BRANCHING DIAGRAM**





**SEGMENTS**

**HEADER SECTION**

**M UNH MESSAGE HEADER**

Segment Function: To head and identify the message type and version.

Message Level: Header

Segment Repeats: 1

Segment Status: Mandatory

Segment Usage: Mandatory

Sample Usage: UNH+002408123456+SANCRT:D:00B:UN:FTLM10'

Clarification: The UNH segment must always be sent.

M	0062	MESSAGE REFERENCE NUMBER		M an..14
R		<i>Message Reference Number</i>		
M	S009	MESSAGE IDENTIFIER		M
M	0065	Message Type Identifier		M an..6
R		<i>SANCRT</i>		
M	0052	Message Type Version Number		M an..3
R		<i>D</i>		
M	0054	Message Type Release Number		M an..3
R		<i>00B</i>		
M	0051	Controlling Agency		M an..2
R		<i>UN</i>		
R	0057	Association Assigned Code		C an..6
R		<i>[FTLM10] (Version 1.0)</i>		
X	0068	COMMON ACCESS REFERENCE		C an..35
X	S010	STATUS OF THE TRANSFER		C



<b>M</b>	<b>BGM</b>	<b>BEGINNING OF MESSAGE</b>
Segment Function:	To indicate the type and function of a message and to transmit the identifying number.	
Message Level:	Header	
Segment Repeats:	1	
Segment Status:	Mandatory	
Segment Usage:	Mandatory	
Sample Segment:	BGM+293+B089876542008000234+9'	
Clarification:	The BGM segment must always be sent.	

R	C002	DOCUMENT/MESSAGE NAME	C
R	1001	Document/message name, coded	C an..3
R		293 Inspection report	
		<i>A message informing a party of the results of an inspection.</i>	
X	1131	Code list qualifier	C an..3
X	3055	Code list responsible agency, coded	C an..3
X	1000	Document/message name	C an..35
R	1004	DOCUMENT/MESSAGE NUMBER	C
an..35			
R		<i>Sender's Unique Internal Reference Number</i>	
R	1225	MESSAGE FUNCTION, CODED	C an..3
D		1 Cancellation (cancel whole message)	
D		5 Replace (replace whole message)	
D		9 Original (whole new message)	
X	4343	RESPONSE TYPE, CODED	C an..3



<b>O</b>	<b>DTM</b>	<b>DATE/TIME PERIOD</b>
Segment Function:	To specify date, and/or time, or period	
Message Level:	Header	
Segment Repeats:	1	
Segment Status:	Conditional	
Segment Usage:	Required	
Sample Segment:	DTM+137:200802291235:203'	
Clarification:	The DTM at this level can be used to specify dates related to the message.	

M	C507	DATE/TIME/PERIOD		M
M	2005	Date/time/period qualifier		M an..3
R		137	Message date/time	
R	2380	Date/time/period		C an..35
R			Date/time	
R	2379	Date/time/period format qualifier		C an..3
R		203	CCYYMDDHMM	



R	STS	STATUS
Segment Function:		To specify the status of an object or service, including its category and the reason(s) for the status.
Message Level:		Header
Segment Repeats:		99
Segment Status:		Conditional
Segment Usage:		Required
Sample Segment:		STS+1+78'
Clarification:		A segment specifying status information relevant to the entire message (e.g. the status of a request or operational process relating to the certificate, permit, etc.).

R	C601	STATUS CATEGORY	C
M	9015	Status category code	M an..3
R		1 Transport	

X	1131	Code list identification code	C an..17
X	3055	Code list responsible agency code	C an..3

R	C555	STATUS	C
M	4405	Status description code	M an..3
R		Code as per UN/ECE Recommendation 24	
		78 Released	
		The goods/consignment/equipment has been released.	
		82 Returned	
		The goods/consignment/equipment has been returned.	
		114 Delivery, accepted subject to further inspection	
		Delivery accepted subject to further inspection of the	
		good/consignment/equipment/means of transport.	
		125 No status. No status information is available.	
		It will be used when the container has been sealed but the	
		SCPP does not know if goods have been released or not.	

X	1131	Code list identification code	C an..17
X	3055	Code list responsible agency code	C an..3
X	4404	Status description	C an..35

X	C556	STATUS REASON	C
X	9013	Status reason description code	M an..3
X	1131	Code list identification code	C an..17
X	3055	Code list responsible agency code	C an..3
X	9012	Status reason description	C an..256

X	C556	STATUS REASON	C
X	9013	Status reason description code	M an..3
X	1131	Code list identification code	C an..17
X	3055	Code list responsible agency code	C an..3
X	9012	Status reason description	C an..256

X	C556	STATUS REASON	C
X	9013	Status reason description code	M an..3
X	1131	Code list identification code	C an..17
X	3055	Code list responsible agency code	C an..3
X	9012	Status reason description	C an..256

X	C556	STATUS REASON	C
X	9013	Status reason description code	M an..3
X	1131	Code list identification code	C an..17
X	3055	Code list responsible agency code	C an..3
X	9012	Status reason description	C an..256



X	C556	STATUS REASON	C
X	9013	Status reason description code	M an..3
X	1131	Code list identification code	C an..17
X	3055	Code list responsible agency code	C an..3
X	9012	Status reason description	C an..256





<b>R</b>	<b>RFF</b>	<b>REFERENCE</b>
Segment Function:		To specify a reference.
Message Level:		Header
Segment Repeats:		99
Segment Status:		Conditional
Segment Usage:		Required
Sample Segment:		RFF+IIR:002408000021'
Clarification:		To specify references applicable to the whole message, such as the reference to the inspection instruction message sent by the party in charge of the management of the positioning for inspection.

M	C506	REFERENCE	M
M	1153	Reference qualifier	M an..3
R		[IIR] <i>Inspection instruction reference</i> <i>Reference to a previous inspection instruction message</i>	
R	1154	Reference number	C an..35
R		<i>Number</i>	
X	1156	Line number	C an..6
X	4000	Reference version number	C an..35



<b>O</b>	<b>FTX</b>	<b>FREE TEXT</b>
Segment Function:	To provide free form or coded text information.	
Message Level:	Header	
Segment Repeats:	9	
Segment Status:	Conditional	
Segment Usage:	Optional	
Sample Segment:	FTX+CHG+C4+CAMBIO DE CONTENEDOR'	
Clarification:	Comments. Code or clear text indication of the type of change with respect to the earlier sent message.	

M	4451	TEXT SUBJECT QUALIFIER	M	an..3
D		AEA Cargo remarks		
X	4453	TEXT FUNCTION, CODED	C	an..3
X	C107	TEXT REFERENCE	C	
M	4441	Free text, coded	M	an..3
X	1131	Code list qualifier	C	an..3
X	3055	Code list responsible agency, coded	C	an..3
D	C108	TEXT LITERAL	C	
M	4440	Free text	M	an..70
M		General remarks referred to the container cargo.		
O	4440	Free text	C	an..70
O	4440	Free text	C	an..70
O	4440	Free text	C	an..70
O	4440	Free text	C	an..70
X	3453	LANGUAGE, CODED	C	an..3



<b>M SEGMENT GROUP 1 - DOC</b>	
Group Function:	A group of segments identifying documentary requirements where they are needed as supporting information for the entire message.
Group Repeats:	9
Group Status:	Conditional
Group Usage:	Dependent
Clarification:	A group of segments identifying documents related to the message, such as the request for permit sent to the Border Inspection Services.

<b>D DOC</b>	<b>DOCUMENT/MESSAGE DETAILS</b>
Segment Function:	To identify documents and details directly related to it.
Message Level:	Group 1
Segment Repeats:	1
Segment Status:	Mandatory
Segment Usage:	Mandatory
Sample Segment:	DOC+850+2008SV000021'
Clarification:	A segment identifying a specific document required as supporting information for the entire message.

M	C002 DOCUMENT/MESSAGE NAME	M
R	1001 Document name code	C an..3
	<i>It has to be declared the regulatory body that has requested the physical inspection (it could be more than one). They have to be the same than those declared at the previous COHAOR message.</i>	

- D [Z05] Customs  
Customs authorities.
- D [Z50] Sanidad Vegetal (POV-CH) - Phytosanitary  
Government agency responsible for the inspection of vegetable substances being imported for human consumption.
- D [Z51] Sanidad Vegetal (POV-NCH)- Phytosanitary  
Government agency responsible for the inspection of vegetable substances being imported for non-human consumption.
- D [Z52] Sanidad Animal (POA-NCH) - Veterinary  
Government agency responsible for the importation of live animals and for the inspection of food (with animal origin) for animals.
- D [Z53] Sanidad Animal (PONA-NCH) - Veterinary  
Government agency responsible for the inspection of food (with non-animal origin) for animals
- D [Z54] Sanidad Animal (PED)- Veterinary  
(Designated Point of Entry)
- D [Z55] Sanidad Animal (POA-CH) (Export)- Veterinary  
Government agency responsible for the inspection of food (with animal origin) for human consumption.
- D [Z56] Sanidad Exterior (POA-CH) - Foreign health  
Government agency responsible for foreign health matters. (Animal Products).
- D [Z57] Sanidad Exterior (PONA-CH) - Foreign health  
Government agency responsible for foreign health matters. (Non-animal products).



- D [Z58] Sanidad Exterior (PDI-PED) - Foreign Health  
(Designated Point of Import - Designated Point of Entry)
- D [Z59] Farmacia - Pharmacy
- D [Z60] SOIVRE - Quality controls
- D [Z61] SOIVRE - CITES
- D [Z62] SOIVRE - Safety controls
- D [Z63] Guardia Civil
- D [Z64] UAR - Risk analysis unit
- D [Z65] CSI - Container Security Initiative
- D [Z66] Megaports
- D [Z99] Other

X	1131	Code list identification code	C an..17
X	3055	Code list responsible agency code	C an..3
X	1000	Document name	C an..35
R	C503	DOCUMENT/MESSAGE DETAILS	C
R	1004	Document identifier	C an..35
		<i>It must be the same document numbers than those declared in the previous COHAOR message.</i>	
D		<i>If DE1153 is "Z05", "Z63", "Z64", "Z65" or "Z66" it must be included the Customs declaration number.</i>	
D		<i>If DE1153 is "Z60", "Z61" or "Z62" it must be declared the number of the request for commercial quality controls (SOIVRE).</i>	
D		<i>If DE1153 is "Z56", "Z57" or "Z58", it must be declared the number of the request for foreign health safety controls (Sanidad Exterior).</i>	
D		<i>If DE1153 is "Z52", "Z53", "Z54" or "Z55" it must be declared the number of the request for animal health safety controls (Sanidad Animal).</i>	
D		<i>If DE1153 is "Z50" or "Z51", it must be declared the number of the request for phytosanitary controls (Sanidad Vegetal).</i>	
D		<i>If DE1153 is "Z59", it must be declared the number of the request for pharmaceutical controls (Farmacia).</i>	
X	1373	Document status code	C an..3
X	1366	Document source description	C an..70
X	3453	Language name code	C an..3
X	1056	Version identifier	C an..9
X	1060	Revision identifier	C an..6
X	3153	COMMUNICATION MEDIUM TYPE CODE	C an..3
X	1220	DOCUMENT COPIES REQUIRED QUANTITY	C n..2
X	1218	DOCUMENT ORIGINALS REQUIRED QUANTITY	C n..2



<b>R SEGMENT GROUP 6 - EQD</b>	
Group Function:	A group to specify the containers to be released.
Group Repeats:	99
Group Status:	Conditional
Group Usage:	Required
Clarification:	The EQD Group must always be transmitted.

<b>M EQD</b>	<b>EQUIPMENT DETAILS</b>
Segment Function:	To identify a unit of equipment.
Message Level:	Group 6
Segment Repeats:	1
Segment Status:	Mandatory
Segment Usage:	Mandatory
Sample Segment:	EQD+CN+RRRU1234560+45R1'
Clarification:	To specify container or equipment details.

M	8053	EQUIPMENT QUALIFIER	M an..3
R		CN Container	
D	C237	EQUIPMENT IDENTIFICATION	C
R	8260	Equipment identification number	C an..17
R		Equipment Number	
		Container numbers must include both prefix and number, expressed as a contiguous string without spaces or hyphens.	
X	1131	Code list qualifier	C an..3
X	3055	Code list responsible agency, coded	C an..3
X	3207	Country, coded	C an..3
D	C224	EQUIPMENT SIZE AND TYPE	C
R	8155	Equipment size and type identification	C an..10
R		Equipment Size and type	
		Container size and type according to ISO6346 codes.	
X	1131	Code list qualifier	C an..3
X	3055	Code list responsible agency, coded	C an..3
X	8154	Equipment size and type	C an..35
X	8077	EQUIPMENT SUPPLIER, CODED	C an..3
X	8249	EQUIPMENT STATUS, CODED	C an..3
X	8169	FULL/EMPTY INDICATOR, CODED	C an..3



**R SEGMENT GROUP 7 - SEL**

Group Function: A group of segments identifying seals applied a unit of equipment used to transport the product covered by the entire message.

Group Repeats: 99

Group Status: Conditional

Group Usage: Required

Clarification: The SEL Group must always be transmitted.

**M SEL SEAL NUMBER**

Segment Function: To specify the seal number or a range of seal numbers.

Message Level: Group 7

Segment Repeats: 1

Segment Status: Mandatory

Segment Usage: Mandatory

Sample Segment: SEL+NL5694359+CA:::MAERSK SEALAND+1'

Clarification: A segment identifying a seal and the seal issuer for the unit of equipment..

R	9308	SEAL IDENTIFIER	C	an..35
		<i>Seal number</i>		
O	C215	SEAL ISSUER	C	
R	9303	Sealing party name code	C	an..3
		<i>AA Consolidator</i>		
		<i>AB Unknown</i>		
		<i>AC Quarantine agency</i>		
		<i>CA Carrier</i>		
		<i>CU Customs</i>		
		<i>SH Shipper</i>		
		<i>TO Terminal operator</i>		
X	1131	Code list identification code	C	an..17
X	3055	Code list responsible agency code	C	an..3
O	9302	Sealing party name	C	an..35
		<i>Sealing party name (free text)</i>		
O	4517	SEAL CONDITION CODE	C	an..3
		<i>1 In right condition</i>		
		<i>2 Damaged</i>		
X	C208	IDENTITY NUMBER RANGE	C	
X	7402	Object identifier	M	an..35
X	7402	Object identifier	C	an..35



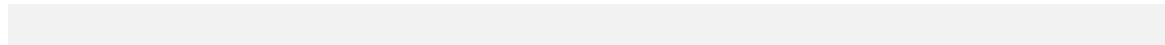
<b>O</b>	<b>DTM</b>	<b>DATE/TIME PERIOD</b>
Segment Function:	To specify date, and/or time, or period	
Message Level:	Group 7	
Segment Repeats:	9	
Segment Status:	Conditional	
Segment Usage:	Optional	
Sample Segment:	DTM+78:200803021152:203'	
Clarification:	A segment identifying a date relevant to the sealing of the unit of equipment.	

M	C507	DATE/TIME/PERIOD	M
M	2005	Date/time/period qualifier	M an..3
R		78 <i>Event date/time/period, actual</i>	
		<i>The actual date/time/period an event occurred.</i>	
		<i>Date and time of the sealing of the unit of equipment.</i>	
R	2380	Date/time/period	C an..35
R		<i>Date/time/period</i>	
R	2379	Date/time/period format qualifier	C an..3
R		203 <i>CCYYMMDDHHMM</i>	



<b>M</b>	<b>UNT</b>	<b>MESSAGE TRAILER</b>
Segment Function:		To end and check the completeness of a message.
Message Level:		Summary
Segment Repeats:		1
Segment Status:		Mandatory
Segment Usage:		Mandatory
Sample Segment:		UNT+28+002408123456'
Clarification:		The UNT must always be sent.

M	0074	NUMBER OF SEGMENTS IN A MESSAGE	M	n..6
R				<i>Number of segments in the message including UNH and UNT.</i>
M	0062	MESSAGE REFERENCE NUMBER	M	an..14
R				<i>Same reference as in 0062 in UNH.</i>





**DATA SET**

Data interchanged in this message:

Data item	Group	Segment	Element		Inspection report
Message date/time	Header	DTM	C507/2005	"137"	R
	Header	DTM	C507/2380	Message date/time CCYYMMDDHHMM	R
	Header	DTM	C507/2379	"203"	R
Status: Released	Header	STS	C601/9015	"1"	D
	Header	STS	C555/4405	"78"	D
Status: Returned	Header	STS	C601/9015	"1"	D
	Header	STS	C555/4405	"82"	D
Status: Delivery, accepted subject to further inspection	Header	STS	C601/9015	"1"	D
	Header	STS	C555/4405	"114"	D
Reference to a previous instruction message	Header	RFF	C506/1153	"IIR"	R
	Header	RFF	C506/1154	Ref. previous message	R
Cargo remarks	Header	FTX	4451	"AEA"	O
	Header	FTX	C107/4441	Not used	O
	Header	FTX	C108/4440	General remarks	O
Customs inspection	1	DOC	C002/1001	"Z05"	D
	1	DOC	C503/1004	Single Administrative Document	D
"Guardia Civil" inspection	1	DOC	C002/1001	"Z63"	D
	1	DOC	C503/1004	Single Administrative Document	D
UAR (Risk Analysis Unit)	1	DOC	C002/1001	"Z64"	D
	1	DOC	C503/1004	Single Administrative Document	D
CSI (Container Security Initiative)	1	DOC	C002/1001	"Z65"	D
	1	DOC	C503/1004	Single Administrative Document	D
Megaports	1	DOC	C002/1001	"Z66"	D
	1	DOC	C503/1004	Single Administrative Document	D
Sanidad Exterior – Foreign health inspection (animal products-human consumption)	1	DOC	C002/1001	"Z56"	D
	1	DOC	C503/1004	Foreign health Inspection request number	D
Sanidad Exterior – Foreign health inspection (non-animal products-human consumption)	1	DOC	C002/1001	"Z57"	D
	1	DOC	C503/1004	Foreign health Inspection request number	D
Sanidad Exterior – Foreign health inspection (Designated Point of Import-Designated Point of Entry)	1	DOC	C002/1001	"Z58"	D
	1	DOC	C503/1004	Foreign health Inspection request number	D
Sanidad Vegetal - Phytosanitary inspection (Human consumption)	1	DOC	C002/1001	"Z50"	D
	1	DOC	C503/1004	Phytosanitary Inspection request number	D
Sanidad Vegetal -	1	DOC	C002/1001	"Z51"	D



Phytosanitary inspection (Non-human Consumption)					
	1	DOC	C503/1004	Phytosanitary Inspection request number	D
Sanidad Animal - Veterinary inspection (Animal origin - Non-human Consumption)	1	DOC	C002/1001	"Z52"	D
	1	DOC	C503/1004	Veterinary Inspection request number	D
Sanidad Animal - Veterinary inspection (Non-Animal origin - Non-human Consumption)	1	DOC	C002/1001	"Z53"	D
	1	DOC	C503/1004	Veterinary Inspection request number	D
Sanidad Animal - Veterinary inspection (Designated Point of Entry)	1	DOC	C002/1001	"Z54"	D
	1	DOC	C503/1004	Veterinary Inspection request number	D
Sanidad Animal - Veterinary inspection (Animal origin / Human Consumption)	1	DOC	C002/1001	"Z55"	D
	1	DOC	C503/1004	Veterinary Inspection request number	D
Pharmacy inspection	1	DOC	C002/1001	"Z59"	D
	1	DOC	C503/1004	Pharmacy Inspection request number	D
SOIVRE – Quality control inspection	1	DOC	C002/1001	"Z60"	D
	1	DOC	C503/1004	SOIVRE Inspection request number	D
SOIVRE – CITES inspection	1	DOC	C002/1001	"Z61"	D
	1	DOC	C503/1004	SOIVRE Inspection request number	D
SOIVRE – Safety control inspection	1	DOC	C002/1001	"Z62"	D
	1	DOC	C503/1004	SOIVRE Inspection request number	D
Other inspection	1	DOC	C002/1001	"Z99"	D
	1	DOC	C503/1004	Other inspection (not specified)	D
Equipment number	6	EQD	8053	"CN"	R
	6	EQD	C237/8260	Equipment number	R
	6	EQD	C224/8155	Equipment size/type ISO6346	R
Seal number	7	SEL	9308	Seal number	R
	7	SEL	C215/9303	Sealing party, coded	R
	7	SEL	C215/9302	Sealing party name	O
	7	SEL	4517	Seal condition, code	O
Event date/time, actual	4	DTM	C507/2005	"78"	R
	4	DTM	C507/2380	Event date/time CCYYMMDDHHMM	R
	4	DTM	C507/2379	"203"	R



## SAMPLE MESSAGE

- Inspection report

UNH+002408123456+SANCRT:D:00B:UN:FTLM10'  
BGM+293+B089876542008000234+9'  
DTM+137:200802291235:203'  
STS+1+78'  
RFF+IIR:002408000021'  
FTX+AEA++COMENTS'  
DOC+850+2008SV000021'  
EQD+CN+RRRU1234560+22R1'  
SEL+NL5694359+CA:::MAERSK SEALAND+1'  
DTM+78:200802291235:203'  
UNT+11+002408123456'



## **DOCUMENT MAINTENANCE**

The data content of this document has been prepared and approved by the Port of Barcelona and no alteration may be made to the content of this document without reference to and approval of the Port of Barcelona.

Any remarks, questions, amendments or requested alterations to this document are to be addressed to:

Fòrum telemàtic Secretariat  
Port of Barcelona  
Portal de la Pau, 6  
08039 Barcelona SPAIN

Facsimile: +34 93 298 2108  
Internet: [forum.telematic@portdebarcelona.cat](mailto:forum.telematic@portdebarcelona.cat)